

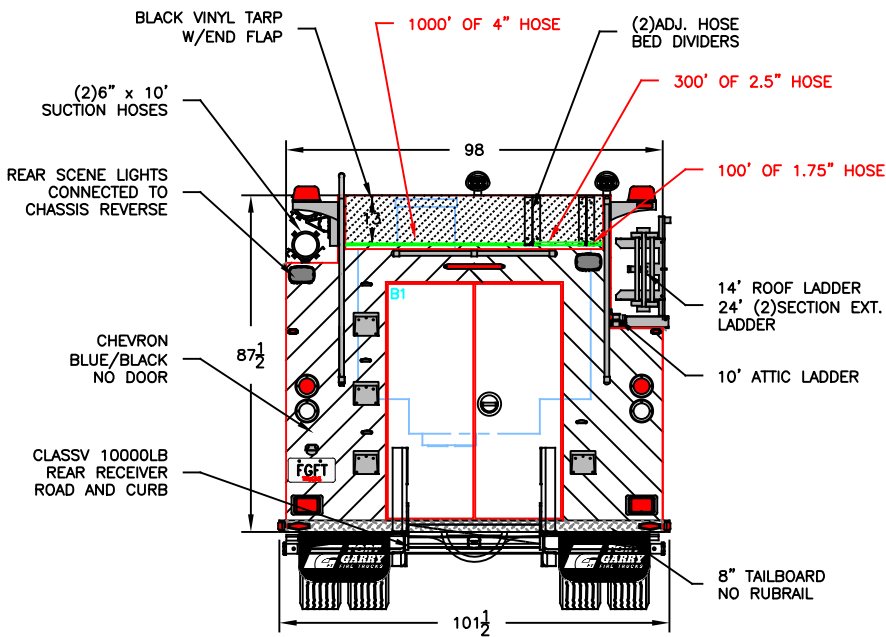
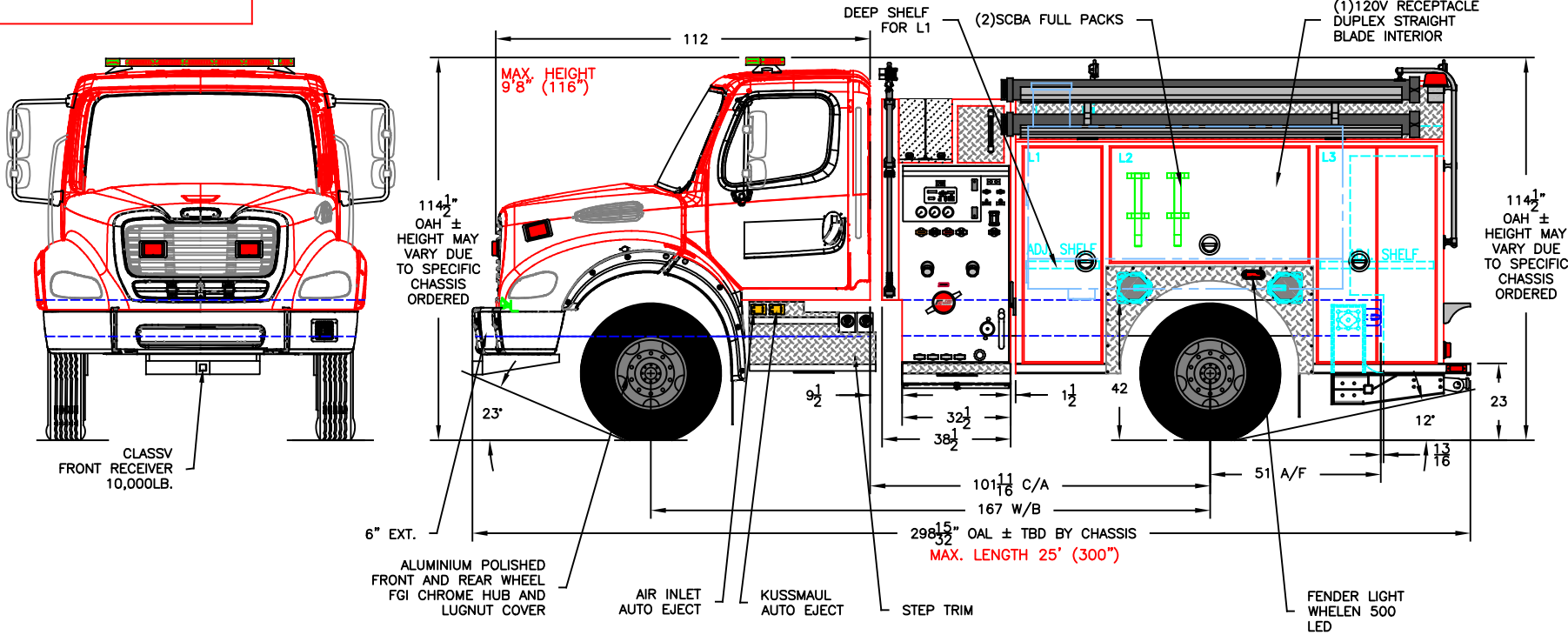
CUSTOMER APPROVAL	IF NOT RETURNED TO FGFT BY THE DATE INDICATED BELOW, WE WILL PROCEED WITH FABRICATION AS PER THE DRAWING
SALES SIGNATURE:	
CUSTOMER SIGNATURE:	
DATE:	
RETURN TO FGFT BY:	DATE: 30TH OCT 2024
REVIEWED BY:	
REVIEW DATE:	
ACCEPTED AS IS:	<input type="checkbox"/>
ACCEPTED WITH REVISION NOTED:	<input type="checkbox"/>
REVISE AS NOTED AND RE-SUBMIT:	<input type="checkbox"/>

BODY TYPE: EXTRUDED ALUMINUM
TANK TYPE: DRY SIDE

DOC. NO. : E018-1 DRAWING TEMPLATE
REV. C 2017-02-05

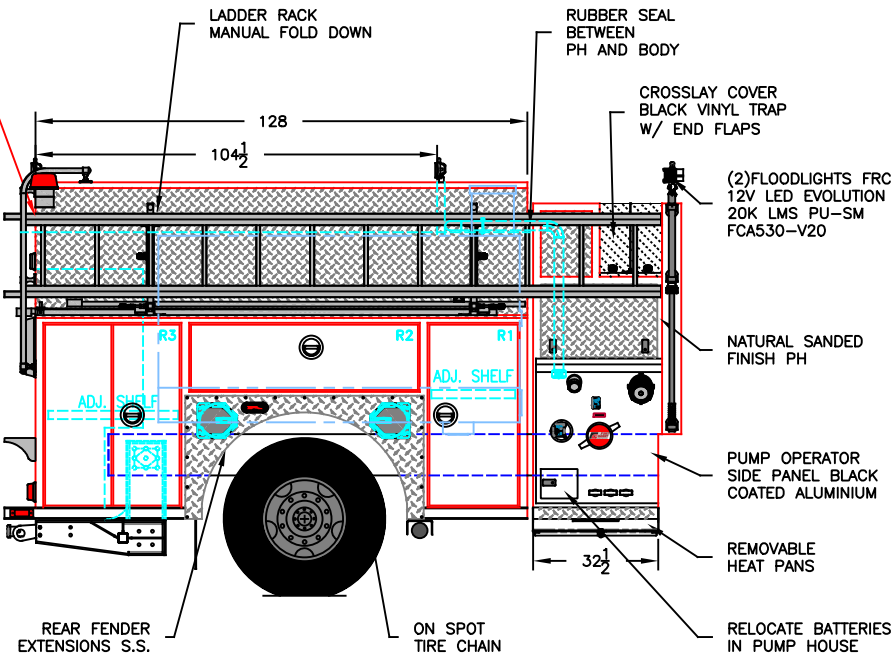
SPECIFICATION

- CHASSIS:**
-FREIGHTLINER M2 112 REGULAR CAB
-41,600 LB GVWR; 14,600 LB FRONT / 27,000 LB REAR
-DIESEL ENGINE, DETROIT DD13 GEN 5, 12.8L 505HP
-AUTOMATIC TRANSMISSION, ALLISON 4000 EVS
-CHASSIS SUPPLIED ANTI ROLL STABILITY
- PUMP:**
-HALE MBP 1000 PTO
-4000 LPM (REF. 1000 USGPM, 840 IGPM) AT 150 PSI
-THIRD PARTY CERTIFICATION MEETING NFPA 1901-2016
- PLUMBING: STAINLESS STEEL SCHEDULE 10**
-2 x 6" SUCTION, (1)ROAD (1)CURB W/MANUAL MIV
-1 x 2 1/2" GATED SUCTION, (1)ROAD
-3 x 2 1/2" DISCHARGE PORT, (2)ROAD (1)CURB
-2 x 1 1/2" CROSS LAY'S
-1 x 4" STORZ DISCHARGE W/3" PLUMBING
-4" TANK TO PUMP, W/3" BFY VALVE
-2" TANK FILL AKRON
- TANK:**
-960 USG (800 IG) POLY WATER TANK
- BODY:**
-MXV FLAT BACK ALUMINUM HIGH/MED
-BODY UNDERCOATING - CORASHIELD
- EMERGENCY EQUIPMENT-ACCESSORIES:**
-LIGHT BAR 56" LED
-SIREN
-100W SPEAKER
-2 x REAR BEACONS (1)RED
-2 x FLOOD LIGHTS
-2 x GRILLE LIGHTS RED
-2 x INTERSECTION LIGHTS RED, CAB
-2 x INTERSECTION LIGHTS RED, FENDER
-2 x REAR LWR WARNING LIGHTS RED
-2 x REAR SCENE LIGHTS
-6 x GROUND LIGHTS
-AIR CHARGING PROVISION
-BATTERY CHARGING PROVISION
-ANTENNA MOUNT
-10' FOLDING LADDER
-14' ROOF LADDER
-24' EXTENSION LADDER
-(2) 6" x 10' SUCTION HOSE
- MODEL:**
WHELEN JUSTICE 56"
WHELEN SMARTSIREN
CEN COM
WHELEN SA315P
WHLEN L31HRFN LED
DTI 010Wx6 LED
WHELEN 600 LED
WHELEN 600 LED
WHELEN 500 LED
WHELEN 600 LED
WHELEN M6 LED
LUMA BAR H20-12
KUSSMAUL CHIEF SERIES
DUO-SAFETY 585-A
DUO-SAFETY 775-A
DUO-SAFETY 900-A



CUSTOMER HAS LENGTH RESTRICTION. THEY WANT TO HAVE LADDERS PUSH FORWARD.

CUSTOMER IS OK WITH THIS LADDER POSITION. FGFT DOES NOT RECOMMEND AND SUPPORT THIS LADDER LOCATION DUE TO CROSSLAYS.



THIS DRAWING IS PROPERTY OF FORT GARRY FIRE TRUCKS LTD (FGFT) AND MUST NOT BE COPIED OR REPRODUCED IN WHOLE OR IN PART, BY ANY METHOD WHATSOEVER, WITHOUT AUTHORIZATION OF FGFT.

- NOTES:**
- THE DRAWING IS FOR REFERENCE PURPOSE, ONLY. THE DRAWING MAY OR MAY NOT SHOW ALL ITEMS AS DESCRIBED IN THE WRITTEN DETAILED SPECIFICATION.
 - INCLUSION OF AN ITEM ON THE DRAWING DOES NOT CONSTITUTE INCLUSION OF THAT ITEM WITH THE FINAL DELIVERY OF THE UNIT. SPECIFICATION SHALL BE FINAL AUTHORITY TO BE DETERMINED WHAT IS SUPPLIED ON THE APPARATUS.
 - THE EFFECTIVE DOOR OPENING FOR ROLLUP DOORS WILL BE REDUCED APPROX. 10" IN HEIGHT, 2" IN DEPTH AND 2" IN WIDTH FROM SHOWN FRAME OPENINGS AND 2" IN HEIGHT, 3" IN DEPTH AND UP TO 4" IN WIDTH FOR PAN DOORS. DIMENSIONS TOLERANCE $\pm 1/4"$ THE ACTUAL VALUES MAY VARY.
 - PUMP RATING AND TANK CAPACITY ARE SHOWN AS NOMINAL VALUES.
 - CHASSIS GVWR SHOWN IS THE MINIMUM REQUIRED FOR STANDARD BODY DEPENDING OF OPTIONS. GVWR MAY NEED TO BE INCREASED.
 - COMMERCIAL OEM CAB STEPS MAY NOT MEET ULC STANDARD. SELECT CUSTOM STEPS WHEN REQUIRED
 - OVERALL HEIGHT IS IN LOADED CONDITION, UNLOADED HEIGHT MAY BE 4" ABOVE HEIGHT SHOWN. AFTER TRUCK IS COMPLETED ADDITIONAL STEPS MAY BE REQUIRED TO MEET THE STANDARD.
 - DIMENSIONS SHOWN ARE APPROXIMATE AND ARE SUBJECT TO CHANGE AS MAY BE FOUND NECESSARY DURING DESIGN. DO NOT SCALE DRAWING.
 - MINOR DETAILS AND REFLECTIVE STRIPING ARE NOT SHOWN.

COMPT.	COMPARTMENT FRAME DIMENSIONS
L1	24W x 65H x 13.5/26D
L2	60W x 35H x 13.5D
L3	36W x 65H x 13.5/26D
R1	24W x 48H x 13.5/26D
R2	60W x 18H x 13.5D
R3	36W x 48H x 13.5/26D
B1	46W x 62H x 18/28D

D	CUSTOMER SIGN OFF DRAWING	SP	16TH OCT 2024
C	CUSTOMER SIGN OFF DRAWING	SP	08 OCT 2024
B	CUSTOMER SIGN OFF DRAWING	SP	03 OCT 2024
A	CRM DRAWING	SP	04 MAR 2024
REV	DESCRIPTION OF CHANGE	BY	DATE

FORT GARRY
FIRE TRUCKS
WWW.FGFT.COM
WINNIPEG, MANITOBA, CANADA 1-800-565-3473

DESCRIPTION: <i>GARRATTSVILLE N.Y.</i>			MODEL: AMS08H4	SHEET: 1 OF 1 DWG. NO. : J0478
SCALE: 1:45	DWG. BY: TV	CHK. BY:	DATE: 09 MAR 2023	